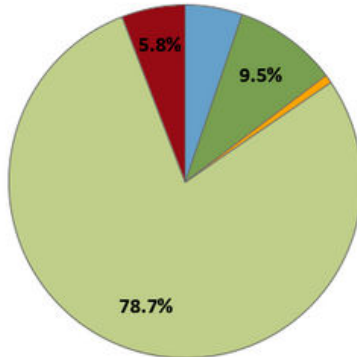


BASED ON COMMUNITY FEEDBACK & USAGE

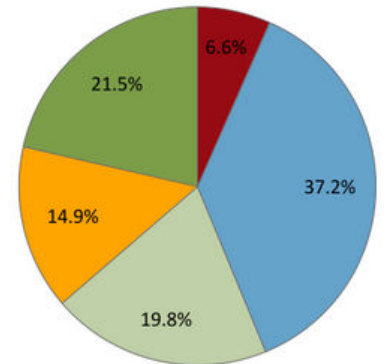
Current Usage

- Programs
- Technology
- Meeting/Tutoring
- Collections
- Services



Community Needs

- satisfied as is
- programs
- larger collection
- meeting & tutor rooms
- children's area



“I feel our library truly bookends our community because of the diversity of special programs it features from children and family programs to adult activities. It’s a safe and welcoming presence.” *Community Member*

TODAY'S LIBRARY

- Open 287 days annually
- Hosts 371 annual programs attended by 6,899 guests
- Summer programs attract 1,411 kids alone
- 28 Community Partners
- 4,910 monthly visitors
- 650 monthly Wi-Fi & computer users
- 103,769 annual items borrowed



WHY IS OUR LIBRARY IMPORTANT?



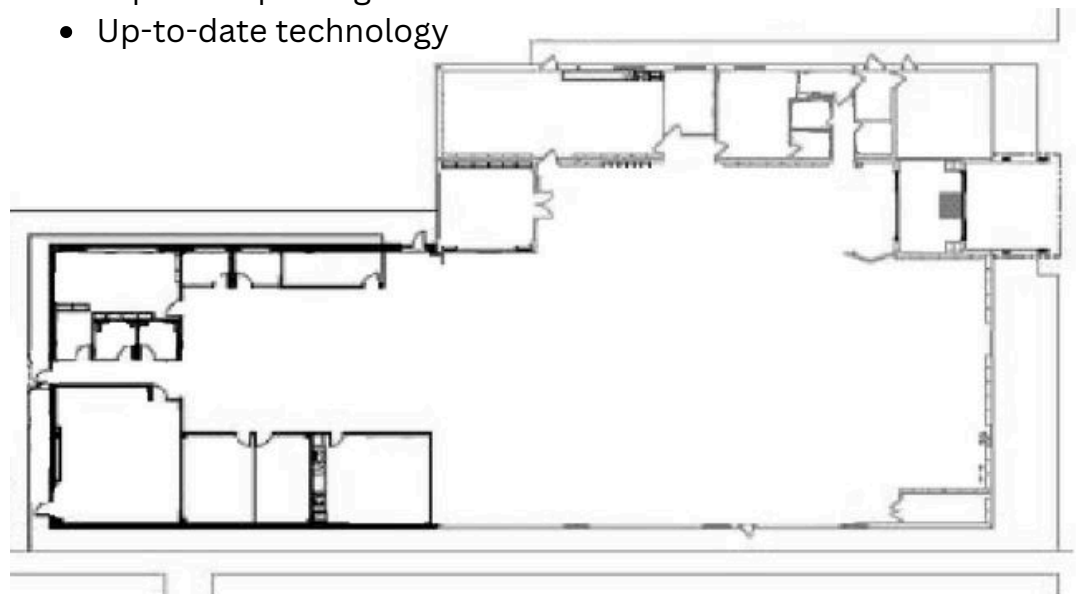
- It's the face of our community.
- It's a logical, central location to:
 - share talent,
 - explore interests
 - meet friends or colleagues.
- It's a technology center with:
 - computers, laptops, and tablets
 - WiFi and hotspots
 - copy, print, scan, and fax
 - large format scanning
 - microfilm reader/printer
 - Notary service
- It's a safe haven for all ages to learn and grow.
- An education center. Library collections, connections, and staff link users to information and services across the globe.

PREPARING FOR THE FUTURE

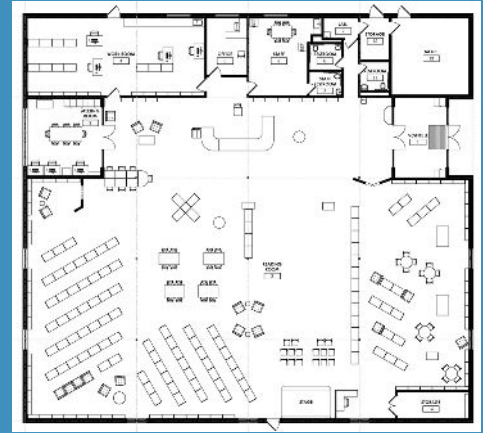
The size and layout of the current library constrains access to popular programs and services. While the original footprint remains intact, roofing, interior renovation, and HVAC replacement have taken place through careful library savings and grants.

Currently, there is no dedicated programming space and no dedicated meeting space. Despite increased usage by school children and youth, the library has no individual tutoring space available.

- 2 meeting rooms
- 2 tutoring rooms
- A quiet, research room
- Dedicated program space
- Teen library
- New circulation desk
- Friends of the Library Store
- Additional collection space
- Additional restrooms
- New entry portico with automatic sliding doors
- Expanded parking
- Up-to-date technology



EXISTING FLOOR PLAN



- open floor plan
- 1 multi-use room
- 1 staff workspace
- 1 office
- 1 breakroom
- 3 restrooms
- 1 storage closet
- 1 file room

OUR FUTURE

THOUGHTFUL PLANNING

Library volunteers are working with architectural firm, Passero Associates, to create draft building plans that will provide:

- A welcoming entrance
- Convenient circulation, efficient service points, ergonomic work spaces
- Appropriate sight lines
- Engaging, educational design for kids
- Connected and interest-based learning
- Flexible design for life-long learners and transparent gathering spaces
- Intuitive, seamless technology
- Sustainability
- Increased programming



A library's design can make programs and services easy or impossible to deliver.

STRATEGIC PLANNING

The building project is Phase 2 of a multi-year plan.

Phase 1: two neighboring properties were acquired, buildings razed, and grounds graded without assuming debt.

Phase 2: expand to meeting community needs and offset costs through grants and a capital campaign



VOLUNTEERS DEDICATED TO THE VISION

Board of Trustees

Cynthia Kiebala - President, Isabella Mark - Vice President, David Schwert, Steve O'Dea, Kathleen Boice

Steering Committee

Todd Bensley, Julie Berry, Jim Hancock, Gary Jones, Jon Sherman, Charlie Slack, Sandy Tompkins

Building Committee

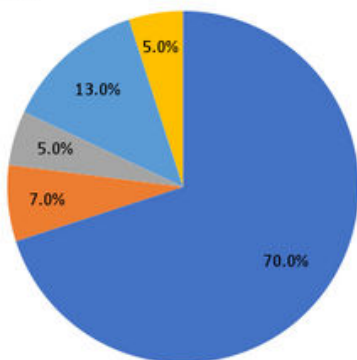
Andrew Meier, Katie Oakes, Catherine Cooper, Noori Bibi, Bronwyn Green, Jeanne Tuohey, Cynthia Kiebala, Kathy Boice, Dave Schwert

BUILDING FOR THE FUTURE

For the library’s “Next Chapter,” leadership is proposing the renovation of the present facility of 11,100 square feet and an expansion of 4,785 square feet. The project cost, with fees, furnishings, and contingencies, is an estimated \$5.2 million. Upwards of 50% could be defrayed through grants, donations, and savings.

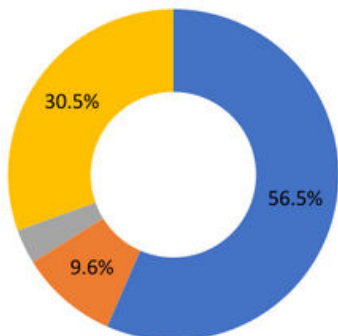
Project Cost Breakdown

- Construction
- Contingency
- Escalation
- Fees
- Furniture



Funding Sources

- Bond
- Capital Campaign
- Savings
- Grants



FUNDRAISING CAMPAIGN

Based on our Feasibility Study, a \$500,000 fundraising campaign is achievable in our community. Donor benefits will include a 5-year pledge period, tax deductibility, employer matching gift opportunities, the acceptance of cash and non-cash gifts, and naming opportunities.

There is no better time than now to reinvest in Medina’s community hub: its public library. Please consider how you may become meaningfully involved in this important project.

For more information on the library, go to leewhedon.org or contact Kristine Mostyn, Library Director at 585-798-3430



“I think everyone in the community can benefit from library services; however, I think those that are most influenced might be those who struggle with financial or technical issues at home. Consider that 19% of residents live below poverty level.” *Community Member*